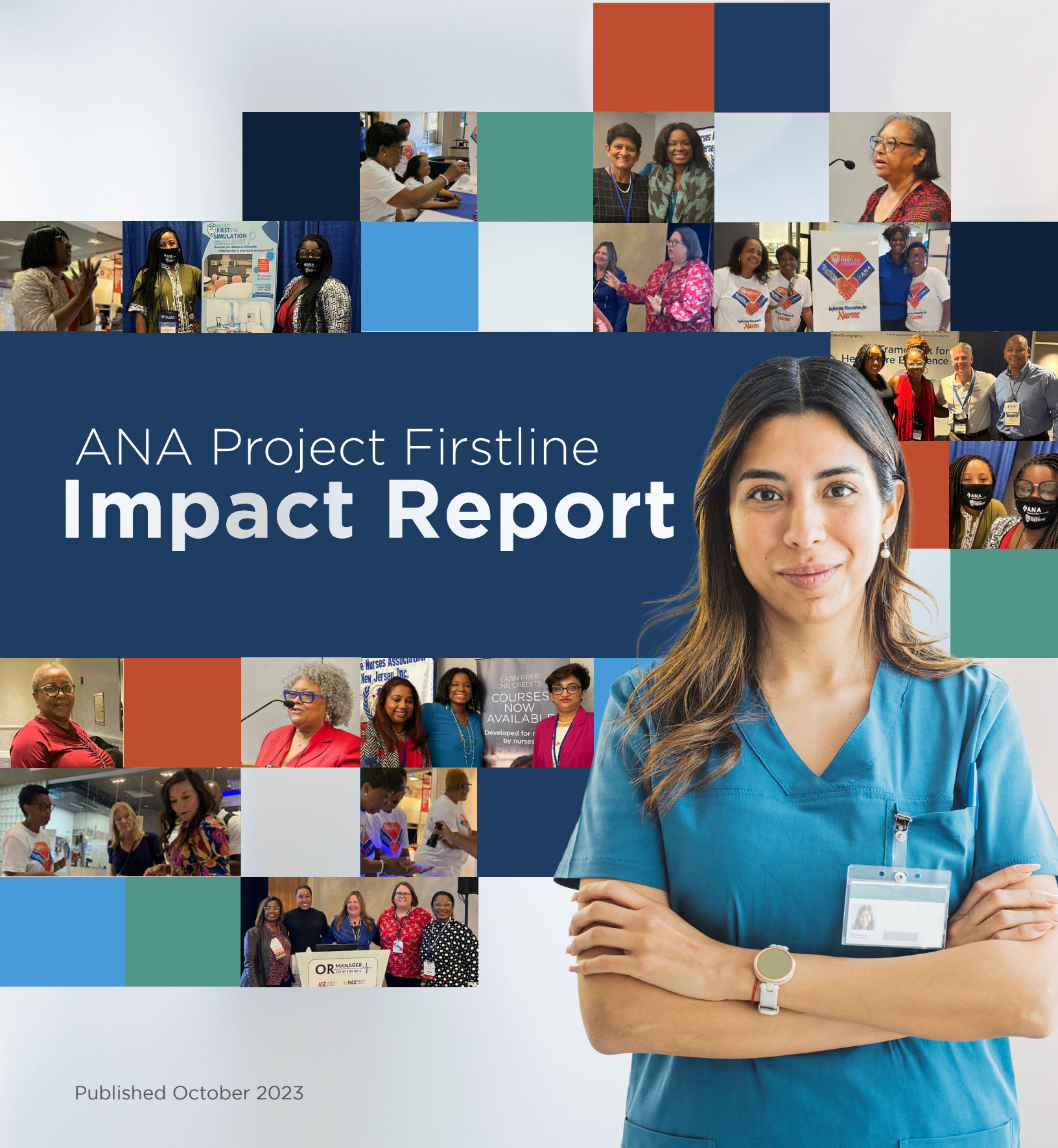


ANA Project Firstline Impact Report



Project Firstline: 3 Years in Review

The **American Nurses Association (ANA) Project Firstline** is excited to share three years' worth of infection prevention control (IPC) education.

When ANA Project Firstline launched in 2021, we knew that nurses were the nation's first line of defense against infectious diseases such as COVID-19. Nurses have always played an important role in IPC and the COVID-19 pandemic made this clear.

Evidence demonstrates that IPC is most effective when all members of the health care team consistently apply best practice principles and protocols. Within the interprofessional team, nurses are well-positioned to be IPC advocates, using risk assessment and problem-solving skills to optimize safe patient care environments.

A COLLABORATION WITH THE CDC AND AAP

Project Firstline, a national training collaborative led by the Centers for Disease Control and Prevention (CDC) in partnership with the American Academy of Pediatrics (AAP), is dedicated to creating innovative and engaging IPC education materials for the nation's health care workforce to help all team members confidently effect change and education.

ANA, funded by AAP, is one of 75 organizations partnering with the CDC on this initiative, which includes resources focused on identifying and addressing infection control challenges. The partnership enables us to share an interactive series of free online tools that provide training and information about IPC. It also includes comprehensive education about best practices for COVID-19 and other pathogens, and evidence-based strategies to improve outcomes.

"It's been three years since the launch of ANA Project Firstline, and we remain undaunted in our efforts to improve infection prevention and control for all patients. **ANA is proud of the content we have created and disseminated while partnering with CDC to improve infection control practice for nurses with content created by nurses.** As one of the only nursing organizations selected as a grantee, ANA Project Firstline's efforts have impacted registered nurses, advanced practice nurses, licensed practical nurses, and nursing students alike. We have influenced care in both acute and long-term care settings. We have engaged with our sub-grantee organizations in the hospital setting, school-based clinics, academic settings, and skilled nursing centers. **As the largest organization representing the nation's more than 5 million nurses, ANA has been fortunate to help nurses improve infection prevention and control.**"

— **Katie Boston-Leary, PhD, MHA, MBA, RN, NEA-BC**
Director, Nursing Programs, American Nurses Association



ANA PROJECT FIRSTLINE'S IMPACTFUL APPROACH

ANA Project Firstline presented IPC content using the innovative IGNITE model, an evidence-based, brain-based learning theory for online course design that increases learning retention. IGNITE incorporates emerging trends in neuroeducation that feature intervals of intense focus followed by frequent breaks, repetition, and novelty, such as humor and design change. Instructional designers further elevate users' experience by implementing engagement strategies and creative visual elements.

More than 21,846 nurses have completed ANA Project Firstline modules, and **more than 21,493 contact hours** have been awarded. In addition, **more than 3,374 participants** have registered for conference workshops, webinars, and Project ECHO® sessions. Based on post-education evaluations, these nurses overwhelmingly believed their understanding of the educational content positively impacted their clinical practice.

ANA Project Firstline's innovative approach to providing IPC continuing education sought to build competency and close knowledge gaps to achieve lasting positive results in nursing practice and provide safe and effective patient care.

Training



Developed **7** training modules in collaboration with **12** subject matter expert partners



Offered **8** CDC training modules and **14** facilitator training session plans



Created **3** Insight Surveys with **1,495** total participants and developed **4** downloadable infographics to report results

On-The-Go Resources

Users can easily link to trusted websites; watch videos; download and share infographics and fact sheets; and access helpful tools and calculators.



269

Curated resources

32

IPC-related topics

ANA IPC Fundamentals ECHO®: Scenario-Based Learning for Nurses

PARTICIPANT FEEDBACK

“The **focus on research** in the presentation increased my interest in the topic.”

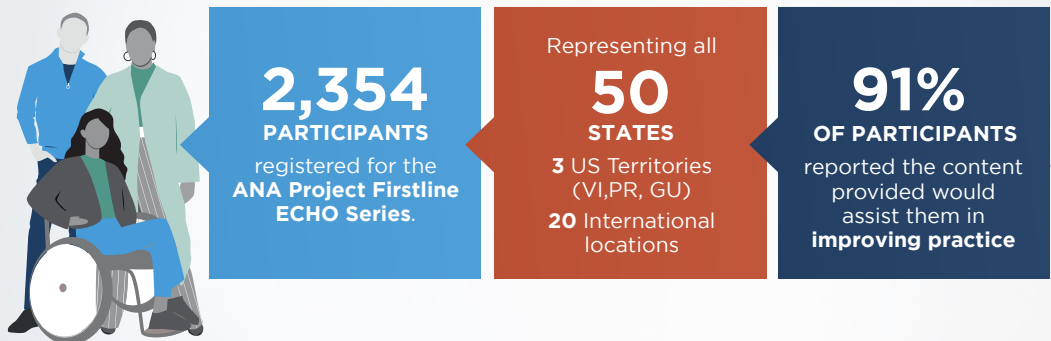
“This information is timely, and serves as a constant reminder of **how a nurse’s practice impacts patients’ lives.**”

As a Project ECHO Hub, ANA offers free tele-mentoring programs that connect nurses with IPC experts using brief lectures, interactive simulations, and scenario-based presentations.

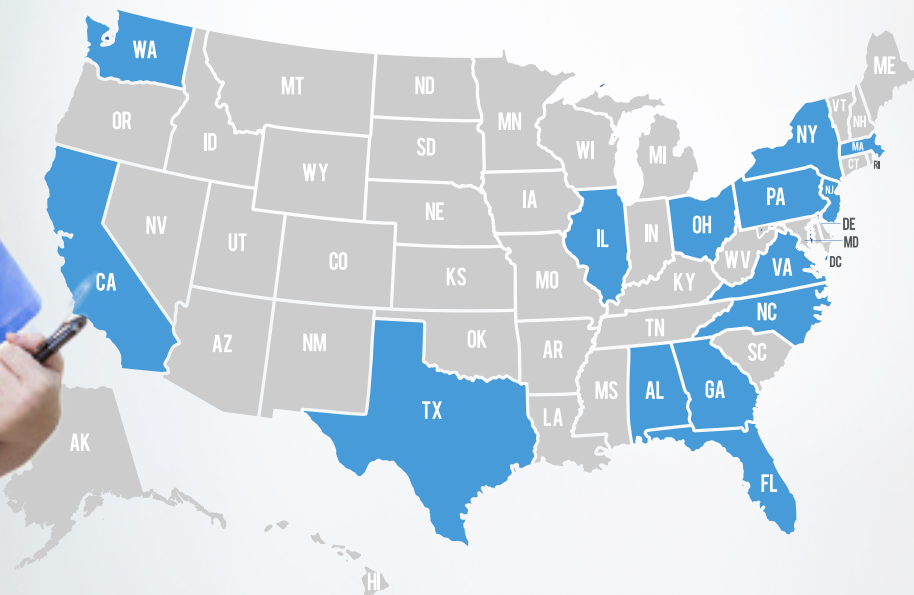
ANA IPC Fundamentals ECHO serves as a forum for nurses to increase their knowledge, skills, and self-efficacy around IPC practices through the lens of infectious disease, helping to grow IPC knowledge networks and expand our capacity to reach valuable front-line health care workers.

Over the past three years, ANA Project Firstline presented four ECHO series, awarding a total of **1,470 continuing nursing education (CNE) credit hours.**

PARTICIPANTS FROM AROUND THE COUNTRY



▼ The map below indicates states with the highest number of registrants (40+).





Thank You to Our Experts!

Our 16 content experts contributed to the success of ANA IPC Fundamentals ECHO. Thank you for your invaluable support of the series!

- Abigail Carlson, MD, Medical Officer, Division of Healthcare Quality Promotion, Centers for Disease Control and Prevention
- Elizabeth Walters, DNP, CPNP, RN, School of Nursing, University of North Carolina, Chapel Hill, American Nurses Association
- James LaVelle Dickens, Captain, DNP, FNP-BC, FAANP, Centers for Medicare & Medicaid Services
- Cindy Hou, DO, MA, MBA, CIC, CPHQ, CPPS, FACOI, FACP, FIDSA, Infection Control Officer & Medical Director of Research, Jefferson Health New Jersey
- Joel M. Mumma, PhD, Division of Infectious Diseases, Emory University School of Medicine
- Laura Webster, D.Be, RN, HEC-C, Director, Virginia Mason Bioethics
- Linda Greene, RN, MPS, CIC, FAPIC, Director Hospital Infection Prevention, University of Rochester Highland Hospital
- Michael Bell, MD, Deputy Director of the Division of Healthcare Quality Promotion, Centers for Disease Control and Prevention
- Rebecca Taylor Alvino, MS, RN, CNS, CIC, CNOR, Infection Preventionist, University of California, San Francisco Medical Center
- Sarah Delgado, DNP, RN, ACNP, Clinical Practice Specialist, Association of Critical-Care Nurses
- Selena Gilles, DNP, ANP-BC, CNEcl, CCRN, FNYAM, New York University Rory Meyers School of Nursing
- Shanina Knighton, PhD, RN, CIC, KL2, Executive Director for the Association for Professionals in Infection Control & Epidemiology (APIC)'s Center for IPC Research, Practice & Innovation (CIPCRPI)
Clinical Research Scholar & Instructor, Frances Payne Bolton School of Nursing, Case Western Reserve University
- Sharon Williamson, MBA, MT(ASCP) SM, CIC, FAPIC, Senior Director, Infection Prevention, Texas Health Resources
- Terri Rebmann, PhD, RN, CIC, FAPIC, Director of the Institute for Biosecurity, Professor of Epidemiology
- Xiaoyan Song, PhD, MBBS, CIC, Chief Infection Control Officer, Children's National Hospital
- Ana Leibecke, MSN, CNP, FNP-BC APRN Education Program Specialist/Nurse Planner Education & Resources, Content Development at ANA

PARTICIPANT FEEDBACK

“This course helped remind me of **why certain protocols are in place.**”

“I loved the **interactive activities** that aided in the learning of this course.”

“I appreciated the **real-life example** to tie in what we were learning.”

Project Firstline CNE Modules

As part of its Project Firstline partnership with the CDC, ANA created learning modules for nurses to refresh their infection prevention and control (IPC) knowledge while earning continuing nursing education credits. These innovative modules combined tried and true education design processes with the latest learning theories. To begin, ANA surveyed 1,500 nurses to determine what they needed to know and how best to present the information. The team opted for brief, easy-to-access instruction modules, available 24/7 on ANA's website. Next, they worked with subject matter experts to refine the content. Finally, they applied the IGNITE model – an innovative, evidence-based learning template that combines intervals of intense focus with frequent breaks, repetition, novelty, and creative visuals. Designed by nurses for nurses, Project Firstline's IPC continuing education builds competency and increases knowledge to achieve lasting positive results.



As of July 2023,
+41,000
LEARNERS
have enrolled in
Project Firstline
CNE modules


Earning
+21,490
CNE contact hours

Modules included:

- The Concept of Infection Control
- Environmental Infection Control: A Focus on High-Touch
- Cleaning and Disinfection in the Health Care Setting
- How Do Viruses Cause Infection?
- The Basic Science of Viruses
- What is Hand Hygiene?
- Infection Safety: A Focus on Infection Prevention
- Multi-Dose Vial Infection Prevention Practices
- Antimicrobial Resistance: The Role of the Clinical Nurse

***Special Thanks to Module
Instructional Designers,
Haim Gbay & Julie Nanavati!***

Thank You to the ANA Education and Resources, Content Development and Product Management Team!

Thank You to Our Subject Matter Experts!

- Assumpta Ekeh, RN, PhD, Adjunct Nursing Professor, Caldwell University
- Alice Hughes, MSPH, MT(ASCP), CIC, Director Infection Prevention, Infection Control, Banner North Colorado
- Denise Thomas, DNP, APRN, ACNS-BC, CCNS, CCRN-CMC, CEN, Clinical Nurse Specialist, Critical Care, St. Anthony Hospital, Centura Health
- Dawn Himes, MS, RD, Executive Vice President, Compass One Healthcare
- Judy L Gates, MSN, RN, BC, CWS, FACCWS, Director of Clinical Education, Banner Health
- Jessica L. Swain, MBA, MLT, CIC, Senior Infection Preventionist, Dartmouth-Hitchcock Medical Center
- Katreena Merrill, PhD, RN, CIC, FAPIC, Professor, Brigham Young University College of Nursing
- William Diehl-Jone, RN, PhD, Associate Professor, Athabasca University Center for Nursing and Health Studies
- Sheryl Buckner, PhD, RN ANEF, Assistant Professor, University of Oklahoma Fran and Earl Zeigler College of Nursing
- Tasha Brown, MBA, MSHCA, BSN, RN, Rho Chi Chi Chapter, Chi Eta Phi Inc
- Valarie Thomas, DNP, RN, CMSRN, ASNA District 5 Vice President
- Agezegn Asegid, BScN, MSc AHN, Ethiopian Nurses Association

The SMEs represented the following partner organizations:

- Alabama State Nurses Association
- University of Oklahoma College of Nursing
- Ethiopian Nurses Association
- Veterans Affairs North Texas
- Seton Hall University College of Nursing
- Saint Anthony Hospital
- Brigham Young University
- Dartmouth Hitchcock Medical Center
- Banner Health
- Rho Chi Pharmacy Honor Society
- Athabasca University
- Compass One Healthcare





Since 2021,
ANA Project Firstline
has worked with

28

**PARTNER
ORGANIZATIONS**
disseminating

\$238,000

IN SUBGRANTEE
FUNDING.



ANA Project Firstline Partner Highlights

Atlanta Black Nurses Association (ABNA)

ABNA has used its Project Firstline grant to reach more than 8,000 health care professionals with online promotions. The association conducted orientation with local hospitals and schools of nursing, who in turn sent information to 1,500 health professionals. Three online educational courses were offered to members of the Atlanta Georgia Nurses Association, ABNA, and Georgia CNS. In addition, ABNA challenged its members to complete two learning modules. To date, they have completed 60, earning an average of 30 CEUs. Abstracts on Project Firstline's IPC resources have been accepted for two upcoming annual conferences — Georgia CNS and the Black Nurses Association, where ABNA will hold a health fair on hand hygiene.

Virginia Mason Franciscan Health (VMFH)

The Project Firstline Extension Grant supported the dissemination of IPC best practices to many nurses in Western Washington State. Additionally, VMFH brought IPC knowledge to its Puget Sound communities and beyond with multiple social media posts, ultimately reaching nearly 20,000 users. The organization's mission serves poor and vulnerable populations and its IPC nurses have used Project Firstline's On-the-Go Resources and grant funds to deliver direct education to those populations, teaching children, parents, and parish health ministers how to prevent infection and protect their health.

Summa Health

With funds provided by ANA Project Firstline, Summa Health was able to create and implement interactive education focused on common infection prevention concerns, hand hygiene, and disinfection. This education was presented to nursing leadership, staff, and students across multiple locations. The organization's goal was to create a fun and engaging educational experience and make a lasting impression. The response from participants was overwhelmingly positive.

Adelphi University

The Adelphi University Grant team recruited 12 champions, all Student Nurses' Association members, to spearhead Project Firstline activities. The champions successfully staged two outreach sessions featuring posters; a sepsis prevention table with gloves, hand gels, soaps, and gowns; and petri dishes with swabs from door handles, phones, and classrooms to demonstrate germ presence. A fun skills station was set up for university students and faculty to demonstrate proper handwashing using glowing germs.



City of Hope

City of Hope focused its efforts on educating nurses about hospital-acquired infections, especially high rates of Clostridium difficile (C. diff) in various units. Recognizing that targeted education was essential, Nimian Bauder, MSN, RN, AGCNS-BC, NPD-BC, EBP-C, Clinical Nurse Specialist, organized a symposium incorporating Project Firstline's educational resources for more than 30 nurses. City of Hope also shared modules focused on C. diff. prevention with nurses and nursing assistants. Bauder put in a lot of effort to ensure that the symposium and infection prevention and control learning opportunities for nurses and nursing assistants were enjoyable. As a form of appreciation, participants were given rewards such as pizza, cupcakes, and pins.

Greater NYC Black Nurses Association

GNYC-BNA has been able to reach its nursing members, nurses in its catchment areas, and students at neighboring nursing schools with online activities, website information, and workshops on improving IPC measures. Workshop attendees said the Escape Room approach, as well as the interactive nature of activities shared via the website and monthly newsletter, were very engaging. In addition, members published an article highlighting these efforts in American Nurse, the official journal of the ANA. They also created a promotional video that highlighted members taking part in their first-ever infection control Escape Room activity. Close to 2,000 individual interactions were noted through various platforms and mediums.

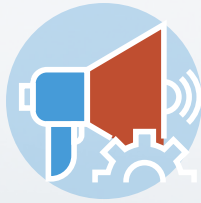


EMORY UNIVERSITY SCHOOL OF MEDICINE, HEALTHCARE HUMAN FACTORS LABORATORY

The ANA/Emory University grant project was a cooperative agreement with the CDC to standardize adult and pediatric patient simulations to better understand the cognitive processes that underlie successful IPC during patient care. The goal was to develop methodologies for assessing and training those competencies.

In Year 1, the team worked with subject matter experts (SME) in adult and pediatric IPC to identify training approaches and develop clinical case scenarios to engage specific metacognitive skills and encourage critical thinking. These scenarios included monitoring for breaks in sterility and contamination events.

ANA PROJECT FIRSTLINE IN THE NEWS



Infection prevention and control is for every nurse
APRIL 7, 2022



Progress and potential — celebrating 125 years of ANA
OCTOBER 11, 2021



ANA Membership Assembly gathers during 125th anniversary year
AUGUST 9, 2021



COVID-19 Update — June 2021
JUNE 8, 2021



You make a difference
MAY 7, 2021



An ounce of prevention
JANUARY 29, 2021



#WeAreFirstline
JANUARY 13, 2021



ANA advocates for nurses' health and safety
JANUARY 11, 2021



New Project Firstline provides infection prevention training
NOVEMBER 9, 2020

Thank you to all our Project Firstline Program Partners!

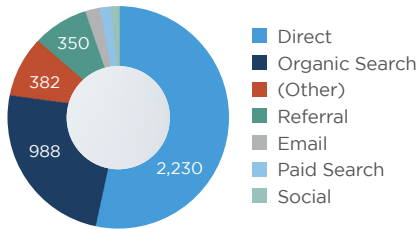
- Adelphi University (New York)
- American Nephrology Nurses Association (New Jersey)
- ANA Midwest Multi-State Division (Arkansas, Missouri, Kansas, Nebraska)
- ANA New York (New York)
- Association for Women's Health, Obstetric and Neonatal Nurses (Washington, D.C.)
- Atlanta Black Nurses Association (Georgia)
- Cayuga Health (New York)
- Central Caroline Black Nurses Council (North Carolina)
- Children's Hospital Chicago (Illinois)
- City of Hope (California)
- Denver Research Institute (Colorado)
- Garnet Health Medical Center (New York)
- Greater NYC Black Nurses Association (New York)
- Jefferson Health (New Jersey)
- Los Angeles County, USC Medical Center (California)
- Lambda Eta Chapter, Chi Eta Phi Sorority, Inc. (Arkansas, Louisiana, Oklahoma, and Texas)
- Mount Sinai West (New York)
- NAINA (New Jersey)
- National Association of Indian Nurses of America (Illinois)
- New Hampshire Nurses Association (New Hampshire)
- New York Institute of Technology (New York)
- Nurses Association of the Counties of Long Island (New York)
- North Carolina Nurses Association (North Carolina)
- Summa Health (Ohio)
- Tennessee Technological University (Tennessee)
- University of Louisiana at Lafayette (Louisiana)
- University of South Florida (Florida)
- University of West Georgia (Georgia)
- Virginia Council for Private Education (Virginia)
- VMFH-Franciscan Medical Group (Washington)

Marketing & Outreach

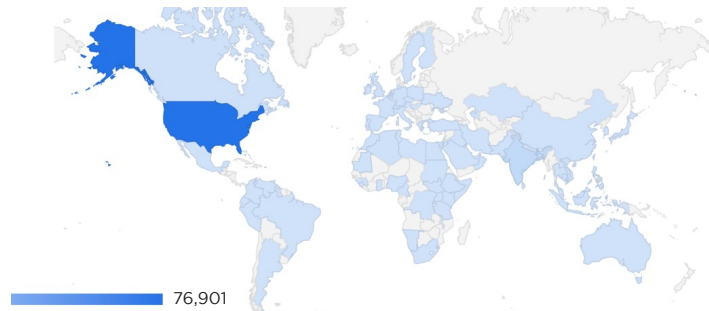
ANA marketing supports Project Firstline by continuing to build awareness and leverage ANA's internal and external channels to expand reach and engagement.



Project Firstline Resources Consumption by Traffic Channel:

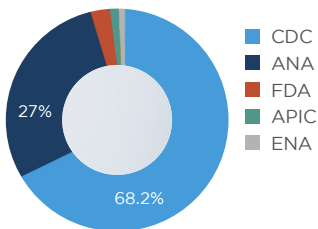


User Locations:

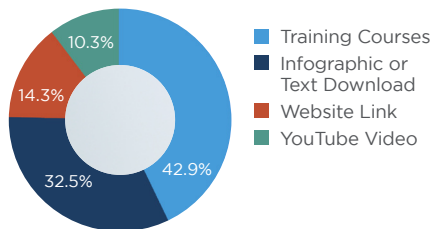


Project Firstline Resources Consumption by:

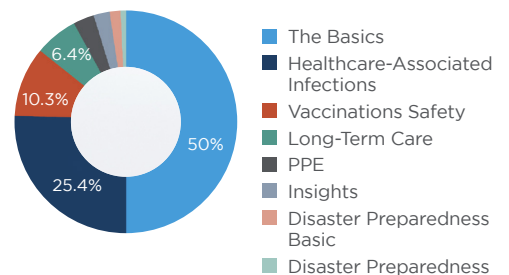
SOURCE



TRAINING TYPE



TOPIC



THANK YOU TO THE ANA PROJECT FIRSTLINE TEAM



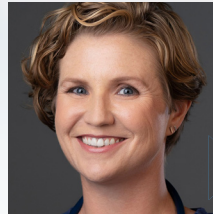
Cheryl Peterson
MSN, RN
Vice President
of Nursing Programs



Kendra McMillian
MPH, RN
Senior Policy Advisor and
Project Firstline Co-Lead



Katie Boston-Leary
PhD, MHA, MBA, RN, NEA-BC
Director, Nursing Programs,
Project Firstline Lead



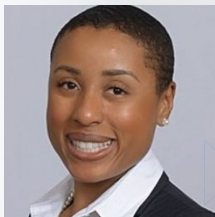
Brittany DiNatale
BSN, RN
Project Coordinator



Sandy Cayo
DNP, FNP-BC
Project Coordinator



Saul Stoogenke
Digital Communications
Consultant



Rasheda Jones
RN, PhD
Nurse Planner



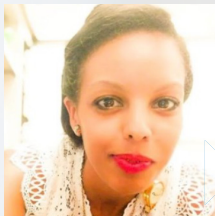
Jackie Zovko
Marketing Consultant



Nicole Anselme
MBA, MSN, RN, CCRN,
SCRN, GERO-BC
Senior Policy Advisor



Autumn Rose
Marketing Consultant



Aieda Solomon
Senior Program Analyst