



INNOVATION ADVISORY COMMITTEE

Policy & Determinants of Health (PDOH)

Vision

The Policy and Determinants of Health Equity Advisory Committee envisions a future where nursing competencies regarding social drivers of health, policy, and community building are incorporated into nursing curriculum with the goal to develop savvy, knowledgeable, competent nurses poised to address health equity.

Armed with this new knowledge and competency, we hope for an increased presence of nursing in the community to extend the conversation and skills related to health equity beyond the silos of hospitals and clinics. Seeing the effects of social drivers of health impacting our patients, we hope for a more significant enthusiasm and participation of nurses with political action including voting, advocacy, and appointments to presidential and state-based committees so that nursing has a profound voice in the future of health.

Contents

- 5 General Resources
- 6 Government
- 7 Legislation & Policy
- 8 Universities & Academia
- 9 Websites, Social, & Podcasts
- 10 Businesses, Organizations & Programs
- 12 Education, Training & Fellowships
- 14 Justice, Equity, Diversity & Inclusion
- 15 Philanthropy & Funding
- 16 Conferences
- 17 Articles & Tools
- 19 Transdisciplinary
- 20 FAQ's
- 25 Definitions

In compiling these innovation resources our goal was to ensure unique information across all eight resource guides and to avoid redundancy. You may find additional content around Policy & Determinants of Health in the general resource guide. We thank the **Policy Determinants of Health (PDOH)** committee for contributing content to advance nurse-led innovation.



General resources

Advocacy

- RNAction [[website](#)]
- ANA Advocacy [[website](#)]

Determinants of Health

- The social determinants of health (SDH) are the non-medical factors that influence health outcomes. They are the conditions in which people are born, grow, work, live, and age, and the wider set of forces and systems shaping the conditions of daily life. These forces and systems include economic policies and systems, development agendas, social norms, social policies and political systems. [[website](#)]
- Confronting Racism: The Work Ahead for Nurses (Free for ANA Members) [[website](#)]
- Determinants of Health Policy: Definition & Examples [[website](#)]
- Initiative to Advance Equitable Health Innovation [[website](#)]
- NCQA Social Determinants of Health [[website](#)]
- Nurse Utilizes Innovation to Create a Health Equity Media Outlet [[website](#)]
- RWJF: Health School Meals for All [[website](#)]
- Three rules rural health systems must follow for virtual care success [[article](#)]

Technology As Determinant of Health

- Digital Health Equity [[website](#)]
- Digital Prosperity: How Broadband Can Deliver Health and equity to all communities [[article](#)]
- RWJF State Network Technology Articles [[website](#)]

Awards

- CNote: “An award-winning impact investment platform where you earn more by investing in the causes and communities that matter to you.” [[website](#)]

Government

Government

- AHRQ Topic: Health Information Technology (HIT) [[website](#)]
- AHRQ: Social Determinants of Health (SDOH) [[website](#)]
- AHRQ: SDOH & Practice Improvement [[website](#)]
- AHRQ: SDOH Data and Analytics [[website](#)]
- APHA Food Security [[website](#)]
- APHA Housing Affordability and Quality [[website](#)]
- APHA Transportation [[website](#)]
- CDC/ATSDR Social Vulnerability Index [[website](#)]
- CDC Community Health Improvement Navigator [[website](#)]
- CDC: Health in All Policies [[website](#)]
- CDC: Healthy Places [[website](#)]
- CDC: What is Health Equity? [[website](#)]
- CDC: Polaris [[website](#)]
- CDC: Policy Resources to Support SDOH [[website](#)]
- CMS: Addressing Social Determinants of Health in Demonstrations Under the Financial Alignment Initiative [[report](#)]
- Healthy People 2030 Social Determinants of Health [[website](#)]
- WHO: Social Determinants of Health [[website](#)]

Legislation & Policy

Legislation and Policy

- Americans with Disabilities Act (ADA) protects people with disabilities from discrimination [[📄 website](#)]
- Black Maternal Health Momnibus [[📄 website](#)]
- Health is always on the ballot [[📄 website](#)]
- Law as a Social Determinant of Health and the Pursuit of Health Justice [[📄 article](#)]
- National Academy of Medicine: Social Determinants of Health 101 for Health Care: Five Plus Five [[📄 website](#)]
- Pathways to Health Equity [[📄 website](#)]
- Satcher Health Leadership Institute Political Determinants of Health [[📄 website](#)]
- Social Determinants of Health Legislation: Opportunities for a New Future [[📄 website](#)]

Universities & Academia

Universities and Academia

- AACN: Diversity, Equity, and Inclusion Faculty Toolkit [[📄 article](#)]
- AACN: Promising Practices in Holistic Admissions Review: Implementation in Academic Nursing [[📄 white paper](#)]
- Campaign for Action: Transforming nursing education to achieve health equity [[🌐 website](#)]
- Carolina Nursing Mobile Health Clinic [[🌐 website](#)]
- Duke Elder Family/Caregiver Training (DEFT) Center [[🌐 website](#)]
- Duke University School of Nursing Mentoring to Increase Access to Health Professions [[🌐 website](#)]
- Integration of Social Determinants of Health in Nursing Education, Practice, and Research [[📄 article](#)]
- NLN: A VISION FOR Integration of the Social Determinants of Health into Nursing Education Curricula [[📄 article](#)]
- University of Pennsylvania Social Justice [[🌐 website](#)]



Websites, Social & Podcasts

Websites

Robert Wood Johnson Foundation

- Culture of Health: Why Health Equity [[🔗 website](#)]
- Culture of Health: Focus Areas [[🔗 website](#)]
- Robert Wood Johnson Healthy Communities [[🔗 website](#)]
- Beckers Healthcare: Health Equity [[🔗 website](#)]
- Wellsky [[🔗 website](#)]

Social Media

- RNAction Nurses Vote [[🔗 website](#)]

Podcasts

- See You Now: Licensed to Touch: Learnings from Ward 5B [[🔗 podcast](#)]
- See You Now: Caring About Access [[🔗 podcast](#)]
- See You Now: Campaign for Health [[🔗 podcast](#)]
- See You Now: Black Midwives & Mamas Matter [[🔗 podcast](#)]
- See You Now: Ready to Vote? [[🔗 podcast](#)]
- See You Now: Representation Matters [[🔗 website](#)]
- See You Now: Tackling Black Men's Health [[🔗 website](#)]



Businesses, Organizations, & Programs

Organizations, Non-Profits, Programs, Businesses

- AmeriCorps [[website](#)]
- City Match [[website](#)]
- Counting Carrots in Corner Stores: Minneapolis Staple Foods Ordinance [[website](#)]
- Find Help [[website](#)]
- Health Equity Initiative [[website](#)]
- Hunger and Health Feeding America [[website](#)]
- National Leadership Academy for the Public's Health (NLAPH) [[website](#)]
- National Resource Directory [[website](#)]
- Root Cause Coalition [[website](#)]
- The Institute for Healthcare Improvement [[website](#)]
- De Beaumont Bold Solutions for Healthier Communities [[website](#)]
- Pushing Produce in New York City's Neighborhoods: The Green Carts Initiative [[website](#)]
- We Care Boston Medical [[website](#)]

Nursing Organizations

- American Association of Nurse Practitioners [[website](#)]
- American College of Nurse Midwives [[website](#)]
- American Association of Nurse Anesthesiology [[website](#)]
- American Public Health Association [[website](#)]
- National Association of Clinical Nurse Specialists [[website](#)]
- National Association of Pediatric Nurse Practitioners [[website](#)]



Education, Training & Fellowships

Education and Training

- Association of Healthcare Journalists [[website](#)]
- Evidence-Based Practice for Clinical Nurses: The PEACE Model [[book](#)]
- Health and Social Work [[website](#)]
- Health Equity [[website](#)]
- Health Equity Happenings [[website](#)]
- Institute for Healthcare Improvement Health Equity [[website](#)]
- Johns Hopkins Evidence-Based Practice for Nurses and Healthcare Professionals: Model and Guidelines, Fourth Edition 4th ed. Edition [[book](#)]
- Nurse Executive Competencies [[article](#)]
- Orthopaedic Nursing [[journal](#)]
- The All of Us Research Program [[website](#)]
- The Future of Nursing 2020-2030: Charting a Path to Achieve Health Equity [[webinar](#)]

Fellowships

- Minority Fellowship Program [[website](#)]
- Robert Wood Johnson Foundation Health Policy Fellows [[website](#)]



Justice, Equity, Diversity & Inclusion

Justice, Equity, Diversity and Inclusion

- Addressing Social Determinants of Health: Celia's Story [[video](#)]
- ANA: Our Racial Reckoning Statement [[website](#)]
- Breaking the Cycle: Health, Poverty, and the Social Determinants of Health [[video](#)]
- CDC: Racial and Ethnic Approaches to Community Health [[website](#)]
- Holistic Admissions [[website](#)]
- Minority Health Disparities | Michelle's Story [[video](#)]
- Not Just COVID: Inequities in Cancer Care, Plus What You Can Do About Them [[website](#)]
- Policy Approaches to Advancing Health Equity [[article](#)]
- So much more to do: A hospital system's campaign to confront racism - and resistance to change - makes early strides [[article](#)]
- Who Cares: A Nurses Fight for Equity [[documentary](#)]
-



Philanthropy & Funding

Philanthropy

- Bill and Melinda Gates Foundation [[🔗 website](#)]
- Bloomberg Philanthropies [[🔗 website](#)]
- CMS announces grants for health equity research [[🔗 website](#)]
- HealthIT.Gov Leading Edge Acceleration Projects (LEAP) in Health Information Technology (Health IT) [[🔗 website](#)]
- HHS awards \$20 million to address disparities in maternal and infant health [[🔗 website](#)]
- Increasing Economic Opportunities Available in Communities by Supporting Community Development Financial Institutions [[🔗 website](#)]
- Funding Opportunities Robert Wood Johnson Foundation [[🔗 website](#)]
- Rural Health Information Hub [[🔗 website](#)]

Funding

- Draper Richards Kaplan Foundation [[🔗 website](#)]
- Kapor Capital [[🔗 website](#)]
- Left Tackle Capital [[🔗 website](#)]
- New Age Capital [[🔗 website](#)]
- SV2 [[🔗 website](#)]

Conferences

Conference

- American Hospital Association Healthy Equity Conference 2023 [[🔗 website](#)]
- Center for Health Justice Conference [[🔗 website](#)]
- Charting the Path For Health Equity As NPs [[🔗 webinar](#)]
- NRHA—Rural Health Conference [[🔗 website](#)]



Articles & Tools

Articles

- Addressing Social Determinants of Health: Examples of Successful Evidence-Based Strategies and Current Federal Efforts [[report](#)]
- ANA's Position Paper on Nursing Addressing Discrimination [[article](#)]
- Beyond Health Care: The Role of Social Determinants in Promoting Health and Health Equity [[article](#)]
- Biden's Goal to End Hunger by 2030 & New Food Conference [[article](#)]
- Creating Evidence to build a Culture of Health Across America. [[website](#)]
- Cultural Competence or Cultural Humility? Moving Beyond Debate [[article](#)]
- Evidence for Action [[website](#)]
- Future of Nursing 2020-2030 [[publication](#)]
- Health Literacy and Health Equity: Connecting the Dots [[website](#)]
- Joint Commission Makes Health Equity a National Safety Goal [[website](#)]
- Nurse Advocacy: Adopting a Health in All Policies Approach [[website](#)]
- State of the Science on Social Screening in Healthcare Settings [[article](#)]
- The Historical Roots and Seminal Research on Health Equity: A Referenced Publication Year Spectroscopy Analysis [[website](#)]
- Voting, Health and Interventions In Healthcare Settings: A Scoping Review [[article](#)]

Tools

- Implicit Association Test [[website](#)]
- Standardized Screening for Health-Related Social Needs in Clinical Settings: The Accountable Health Communities Screening Tool [[website](#)]
- PhenX SDoH Collection Toolkit [[website](#)]
- Prevention Institute Health Equity and Prevention Primer [[website](#)]



Transdisciplinary

Transdisciplinary

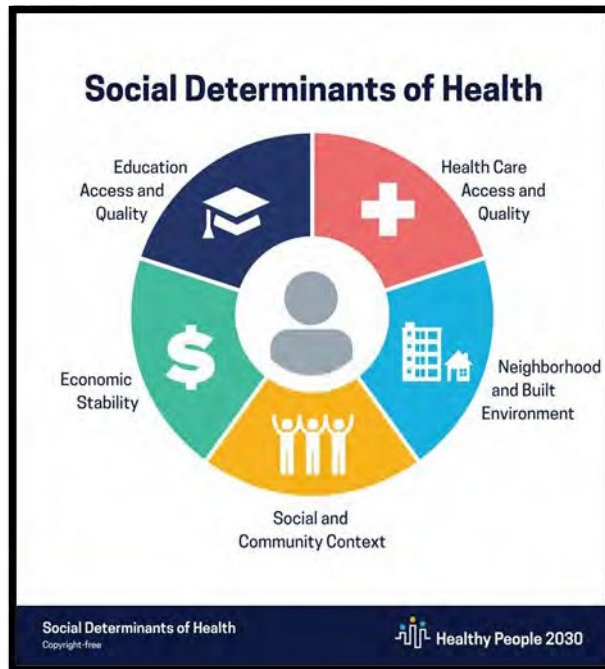
- Accelerating Therapeutics for Opportunities in Medicine (ATOM) [[website](#)]
- Partnership on AI [[website](#)]
- Stanford Partnership in AI Assisted Care [[website](#)]



FAQ's

Q: What are the Social Determinants of Health (SDOH)?

A: The social determinants of health (SDOH) are “the conditions in the environment where people are born, live, learn, work, play, worship and age that affect a wide range of health, functioning, and quality of life outcomes and risks.” (Healthy People 2030, 2020). SDOH can be grouped into the following five domains: [[website](#)]



SDOH contribute to over 60% of a person’s health and wellbeing (Healthy People 2030). By assessing the impact of a patient’s SDOH such as healthcare access/quality, economic stability, social connections, quality education and community safety, healthcare teams are able to attune to patients holistically and mitigate SDOH risks.

Patients who are able to access realize food and housing security, reliable transportation, access to affordable medications, and food security as a result of connection with community resources are likely to see improved overall health and wellbeing.

FAQ's (cont.)

Q: How can nurses and/or health systems understand the impact of SDOH for an individual patient?

A: Numerous stakeholders, researchers, and practitioners have independently developed social risk screening tools for use in health care settings making it unclear which tool is most appropriate for which populations or in which settings, and whether these tools can detect changes in social risks over time. (Kaiser, 2021).

Currently only 15% of practice settings routinely screen for and document SDOH assessments in the medical record, and the ICD-10 manual includes “Z” codes that were created to identify SDOH. These codes (Z55-Z65) fall under the category of “persons with potential health hazards related to socioeconomic and psychosocial circumstances.” They describe problems with education, employment, housing, finances, upbringing, family life, and legal issues (AAFP, 2021).

Screening alone is not enough. Healthcare teams should also be able to help patients access resources to fill gaps that are discovered through screening. Keeping an updated list of local resources can seem arduous, but several websites provide this information based on location.

Published SDOH assessment tool repositories:

Kaiser: Risk Screening Tools Review. [[website](#)]

AJRQ: SDOH & Practice Improvement | Agency for Healthcare Research and Quality. [[website](#)]

SDOH Community Resources by zip code:

Findhelp.org [[website](#)]

AAFP Neighborhood Navigator [[website](#)]

FAQ's (cont.)

Q: How can I find out information about the impact of SDOH within a given community?

A: There are several sources of publicly available community SDOH data.

County Health Rankings: County Health Rankings National Findings Report examines how well-resourced civic infrastructure gives us the space and opportunity to work together and how civic participation helps us build power to improve health. [[🔗 website](#)]

AHRQ: The Agency for Healthcare Research and Quality (AHRQ) developed a searchable database of the 5 SDOH that can be linked to a specific geographical region, like zip code or county. [[🔗 website](#)]

Social Vulnerability Index: Uses 16 U.S. census variables to help local officials identify communities that may need support before, during, or after disasters. [[🔗 website](#)]

Life Expectancy Calculator: Uses community health metrics by zip code to predict life expectancy by individual zip codes and compared to the state and country. Source: Robert Wood Johnson. [[🔗 website](#)]



FAQ's (cont.)

Q: How can I better attune to my patient's SDOH?

A: There are many opportunities for nurses and healthcare organizations to introduce this holistic health practice: Assess patient's SDOH either with a formal screening tool (if in practice in the setting) or less formally during the patient assessment.

If a gap is identified, offer resources to mitigate identified risk(s). Findhelp.org: [[🔗 website](#)]

AAFP Neighborhood Navigator: [[🔗 website](#)]

Identify opportunities in your healthcare organization to introduce a formalized SDOH assessment and resource intervention as part of the general patient care flow, documented within the EHR. Regulatory bodies like HEDIS and NCQA are now mandating this level of attention to SDOH for accreditation. (NCQA, 2020).

SIREN has been spearheading the adoption of SDOH documentation in clinical settings at a grass roots level. To learn more: [[🔗 website](#)]



FAQ's (cont.)

Q: How can nurses engage with communities to help identify and mitigate SDOH risk?

A: Consult with community stake holders like departments of health and departments of education to understand community action plans.

Directory of Local Health Departments - NACCHO [[% website](#)]

Advocate for community improvements to reduce risk/inequities (See IAC Policy FAQ)

Promote awareness of the SDOH risks within a given community and found by assessing patients within your healthcare organization.

Q: How do schools of nursing prepare nurses to understand the impact of SDOH?

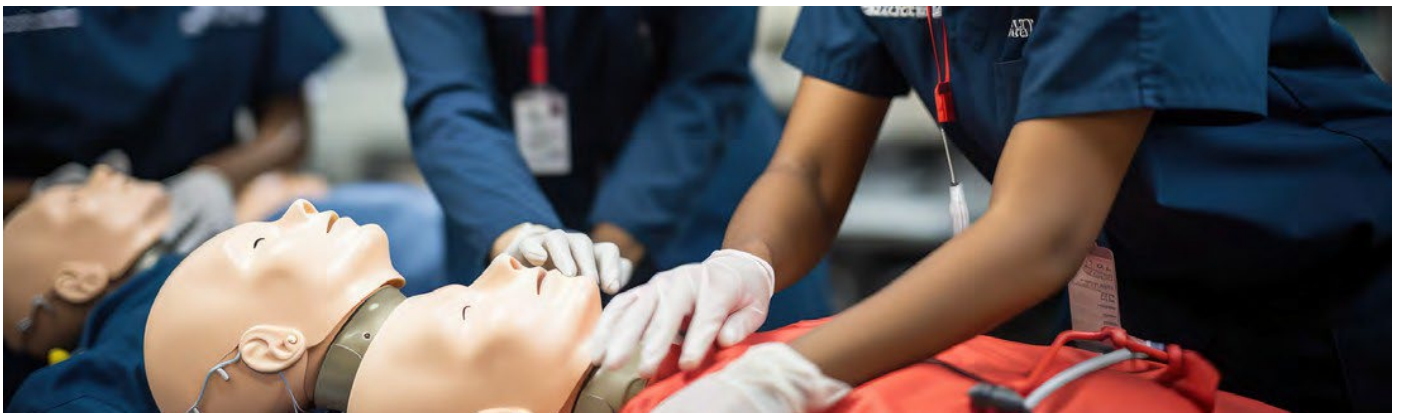
A: Opportunities to prepare nurses:

Prelicensure and graduate nursing programs should integrate SDOH as a foundation of their core curriculum, not just in public health coursework.

Professional courses, such as leadership, health policy, and research can address system, policy, and evidence to promote health equity and diminish the impact of SDOH.

Students should gain experience in addressing SDOH in clinical rotations as well as the classroom.

Addressing SDOH is best addressed within an interdisciplinary team model. As such, this interdisciplinary capability should be a priority during interdisciplinary courses (Thornton, 2018).



Definitions

Term	Definition
Social Determinants of Health/Social Drivers of Health (used interchangeably at times)	The social determinants of health (SDH) are the non- medical factors that influence health outcomes. They are the conditions in which people are born, grow, work, live, and age, and the wider set of forces and systems shaping the conditions of daily life. These forces and systems include economic policies and systems, development agendas, social norms, social policies and political systems. [World Health Organization]
Health Equity	<p>Equity is the absence of unfair, avoidable or remediable differences among groups of people, whether those groups are defined socially, economically, demographically, or geographically or by other dimensions of inequality (e.g. sex, gender, ethnicity, disability, or sexual orientation). Health is a fundamental human right. Health equity is achieved when everyone can attain their full potential for health and well- being.</p> <p>Health and health equity are determined by the conditions in which people are born, grow, live, work, play and age, as well as biological determinants. Structural determinants (political, legal, and economic) with social norms and institutional processes shape the distribution of power and re- sources determined by the conditions in which people are born, grow, live, work, play and age. [World Health Organization]</p>
Health Disparities	Health disparities are preventable differences in the burden of disease, injury, violence, or opportunities to achieve optimal health that are experienced by socially disadvantaged populations. [Centers for Disease Control]
Health Inequities	Health inequities are differences in health status or in the distribution of health resources between different population groups, arising from the social conditions in which people are born, grow, live, work and age. Health inequities are un- fair and could be reduced by the right mix of government policies. [World Health Organization]
Policy	Policy is a law, regulation, procedure, administrative action, incentive, or voluntary practice of governments and other institutions. [Centers for Disease Control]



Policy & Determinants of Health (PDOH)

Members

- Co-Chair: Adriana Agnew, RN, BSN, GERO-BC, MSN' Ed, CCM [[LinkedIn](#)]
- Co-Chair: Co-Chair Heidi Orstad, DNP, RN, PHN, CCM [[LinkedIn](#)]
- Christy Barich, M.Ed, BSN, RN, CDCES [[LinkedIn](#)]
- Elizabeth Chidothe, APRN, BSN [[LinkedIn](#)]
- Hillary Duncan, MSN, RN [[LinkedIn](#)]
- Rebecca Koszalinski, PhD, MS, RN, FARN, CRRN, FIEL [[LinkedIn](#)]
- Germaine Nelson, DNP, MBA, RN, NEA-BC, CPXP, CEN [[LinkedIn](#)]
- Carrie Palmer, DNP, RN, ANP-BC, CDE [[LinkedIn](#)]

Historical Contributors

- Co-Chair: Jessica Hickey, MSN, MSSW, RN, ONC [[LinkedIn](#)]
- Cassandra Loggins, PhD, RN [[LinkedIn](#)]
- Emily Rocha, MBA, MSN, RN, NE-BC, CHCQM [[LinkedIn](#)]
- Heather Ross, PhD, DNP, FAANP [[LinkedIn](#)]

Resource Guide Updates Log		
Date Last Updated	By Who?	What was updated?
06/07/2025	Shannon Gahagan, Graphic Designer	Cover, pagination, and margins
04/07/2025	Shannon Gahagan, Graphic Designer	New brand colors, logos, and fonts, re-formatted layout and stylization of hyperlinks, updated subheaders, corrected spelling and grammar errors

INNOVATION ADVISORY COMMITTEE
Policy & Determinants of Health (PDOH)

These are resources, content, including organizations that are beneficial for nurse innovators to know about no matter their area of interest or focus.

These resources have been compiled into our Policy Determinants of Health (PDOH) Resource Guide.

Our goal when creating these resource guides was to avoid redundancy and ensure unique content across all eight resources.

The creation of the Policy Determinants of Health (PDOH) Guide is a compilation of content from all seven innovation advisory committees. We thank each committee for contributing to the advancement of nurse-led innovation.

The views and opinions expressed within these resources may not reflect the positions or policies of the American Nurses Association. The resources are provided for the sole purpose of highlighting innovative work across the nursing profession.

Listing of links to organizations or groups shall not be construed as an endorsement of said organizations or groups. If you have any questions or concerns, please contact us [here](#).

